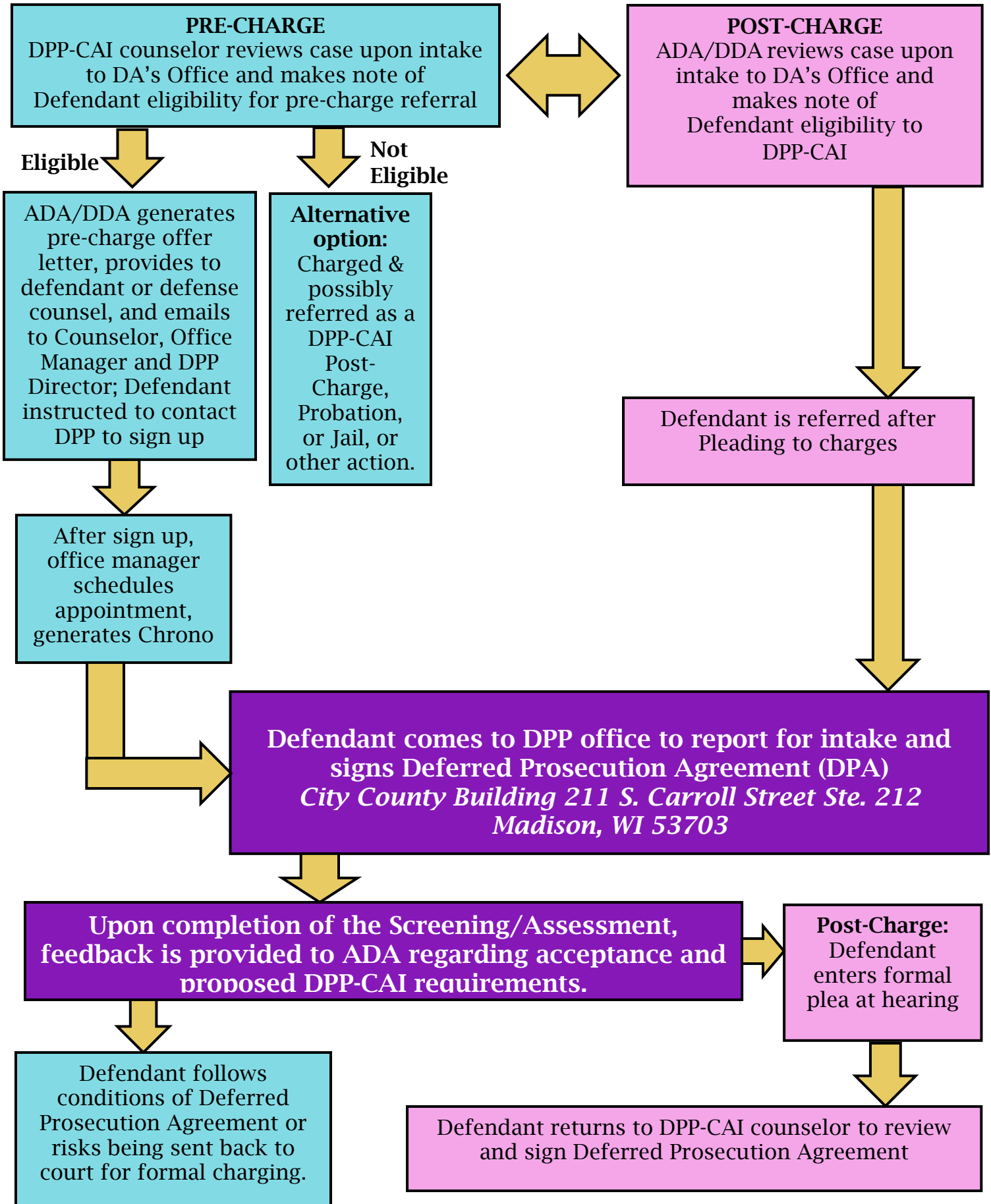


Flow Chart for Child Abuse Initiative Diversion Program (DPP-CAI) Referral Process



Deferred Prosecution Child Abuse Initiative

The Child Abuse Initiative was brought about with the intent to aid in reducing racial disparities by providing participants an opportunity to avoid a felony conviction that would greatly impact their ability to obtain or maintain housing and employment, and by providing services that would prevent child victims' continued exposure to harmful and/or violent parenting practices that are known to contribute to future system involvement. These issues were known to disproportionately affect people of color, and this program intended to divert people of color from the typical criminal justice system response.

.....

DPP-CAI Eligibility Criteria

- Referral offense involves person in caregiving role engaging in physical punishment of a child that results in physical, mental or emotional harm; or non-medical neglect of a child that is not chronic in nature
 - No more than 3 past incidents involving excessive physical punishment resulting in bodily harm to a child within past 10 years (per review of CPS records)
 - No more than 3 prior CPS referral for similar conduct resulting in recommendations for services, and/or no more than 1 prior substantiated case
 - Not eligible if referral offense includes torture, burns, broken bones, internal head trauma, internal organ damage, bite marks, or poly-victimization (in compelling circumstances, this criterion may be waived at the discretion of reviewers)
 - Willingness to refrain from use of physical punishment and adopt non-violent discipline methods
-

Contact Information

*City County Building 211 S. Carroll St, Room 212
Madison, WI 53703*

Tricia Telfer Child Abuse Initiative Case Manager
Tricia.Telfer@da.wi.gov
608-283-1394

Melvin Juetter, Deferred Prosecution Director
Melvin.Juetter@da.wi.gov
608-284-6905